

The UPS & DOWNS of Internet Speed

When you select an internet service package, your package will come with a maximum download speed and a maximum upload speed.

1,000 / **1,000** Mbps

Download speed **Upload speed**

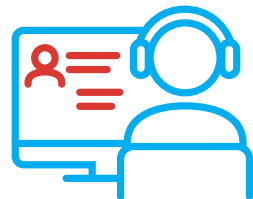
What is download speed?

The first number, your download speed, describes how much capacity you'll have to download things from the internet. The more download speed you have, the more you can do things like

Stream on Netflix



Log on to a webinar for work



Watch your teacher in a virtual class



Download music and movies



Browse the internet



What is upload speed?

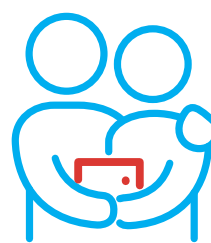
The second number, your upload speed, describes how much capacity you'll have to upload things to the internet. The more upload speed you have, the more you can do things like:



Go live on social media



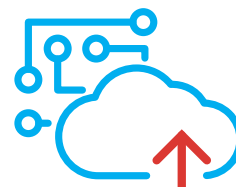
Use telehealth services



FaceTime with family



Have your camera on for a Zoom meeting



Upload videos and photos

How much speed do I need?

If you're only running a small number of devices on your connection, our lowest speed tier might fit your needs. But if your household enjoys streaming television, browsing on their phones, working from home, and more—all at the same time—you'll need more speed to keep every device running smoothly.

**Still not sure what's right for you?
We're happy to help!**

clearwavefiber.com | 877-293-2973